

OVERVIEW

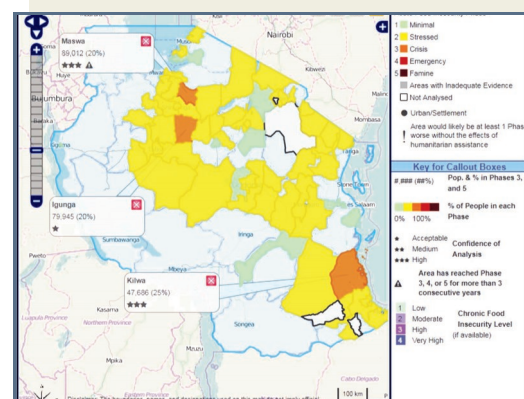
The IPC Information Support System (ISS) is a new innovative web-based application that has been designed to efficiently create, store, and disseminate the IPC version 2.0 analyses and information. The ISS simplifies the IPC analysis process by the digitization of the IPC version 2.0 **core functions** (Building Technical Consensus, Classifying Severity and Causes, Communicating for Action, and Quality Assurance), **procedures** and **templates**.

The ISS has been developed for national stakeholders to utilize in building an IPC version 2 Acute Analysis. It is easy to use because it mirrors the **IPC version 2 Acute Analysis Manual**, and facilitates greater access to IPC analysis and results. The ISS is also being developed for the IPC Chronic Analysis. The **Chronic ISS** will be available in July 2014.

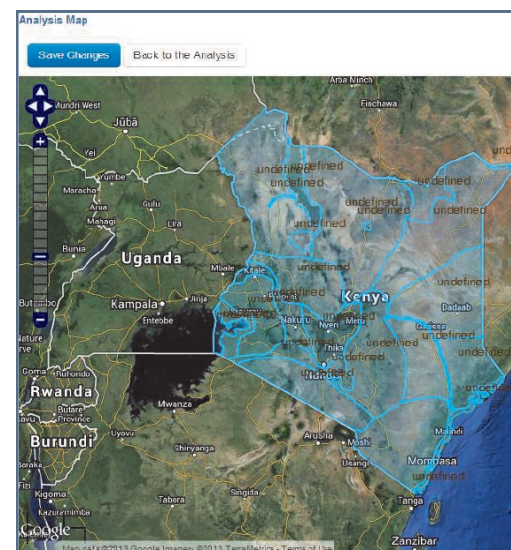
ADVANTAGES

The ISS can facilitate the IPC Chronic and Acute Analyses in the following ways:

- **Enhances the quality** of the analysis by following a more structured tool.
- **Improves understanding** of the IPC because all Functions are packaged in a software.
- **Reduces the time and cost** of the analysis as the ISS automates IPC Functions including automating Communication Template creation.
- **Lessens reliance** on GIS experts by automatically creating the IPC map.
- **Increases transparency** by allowing technical partners and other stakeholders access to the analysis (where the country establishes permissions to do so).
- **Enables a historical database** of previous analyses per country.
- **Enables regional and global comparison** of national analysis on one screen
- **Improves public access** to country IPC analysis at the click of a button of the world map.



Communication Template Map - Tanzania Acute Analysis, December 2013 - April 2014



Example of IPC ISS Analysis Map, Kenya 2013

REQUIREMENTS FOR USAGE

The ISS was developed by the Global Support Unit (GSU) for countries to use for IPC version 2.0 Acute Analysis and version 1.0 Chronic Analysis. The online application is supported by the GSU until December 2015.

Countries who opt-in to the system maintain their own portal at no cost. The ISS is user friendly so that the same capacities involved in the IPC analysis are also used in the ISS (analysts, peer reviewers, others). Minimal

technical capacity is required as the system is **online and secure** against unwarranted users.

A country must nominate a System Admin, ideally someone from the Technical Working Group, who has basic IT skills to create user accounts and grant permissions. Analysts fill in the worksheets. A designated person completes the **Communication Template**.



Example of IPC ISS Country Homepage, Somalia 2013

DEVELOPMENT PROCESS

The ISS allows the **harmonization of IPC analyses between countries and regions** by the development of joint IPC **Communication Maps**.

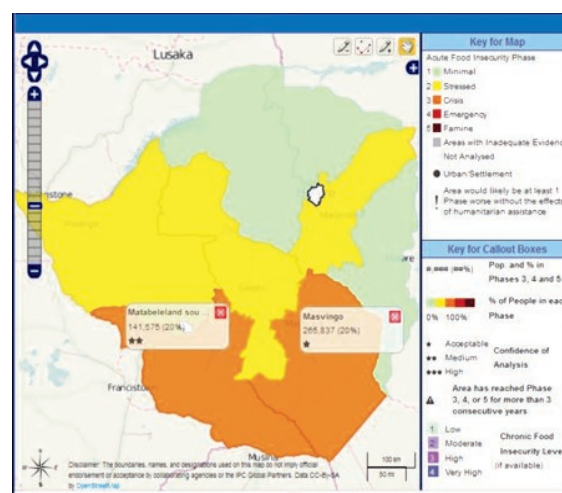
In doing so, the ISS increases transparency and accountability, and enables historical review of IPC analyses conducted at national and regional levels.

The IPC Information Support System (ISS) Acute version was completed in March 2013.

From May to end June 2013, the Acute version underwent further testing and modifications by using data from recent IPC analyses in Somalia and Uganda. Currently, 5 countries around the globe are using the system. These are Tanzania, Sudan, Haiti, Honduras, and Lesotho.

The IPC Global Support Unit is overseeing the development of the ISS which will be an

integral part of the IPC website once fully deployed. Awareness of the ISS is being raised by global, regional, and national stakeholders, as well as via the numerous **IPC trainings** which will occur in the coming months.



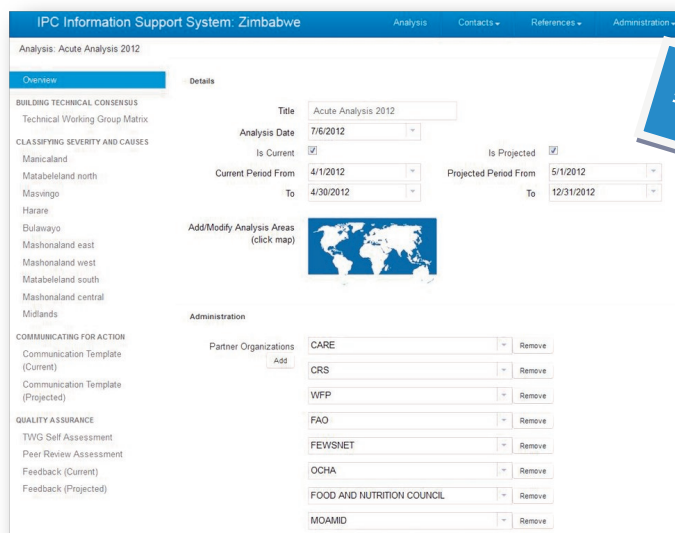
Example of IPC ISS Analysis Map, Zimbabwe 2013

ISS PILOT EXERCISES

In all countries, IPC Technical Working Group (TWG) members commented on the ease of use of the application and the potential to improve quality of analysis due to the standardization of the forms. Other analysts added that the ISS **simplified the data entry process** by automating certain processes, calculations, and steps such as the production of the Communication Template.

The **Acute ISS** has been translated into French and Spanish. Additional languages will be considered upon request.

The **Chronic ISS** is being developed and will be online in early July 2014. The Chronic ISS will be fully integrated into the country portals, making the use of both Acute and Chronic seamless for users.



Analysis Overview Page

IPC ISS Analysis Overview Page, Zimbabwe, April 2012

PUBLIC ACCESS TO IPC ANALYSES

To ensure users are able to utilize the ISS, an Analysts Training has been incorporated into the IPC Level 1 Training. The Analyst training is available in English, Spanish, and French. Additionally, the advanced training for System Administrators, Level 2 trainers, and Regional Coordinators is also available in the same three languages. The System Admin training is

important to ensure countries can own and manage the portal. Each country expecting to implement the ISS should identify a person to support the IPC ISS process. This person would undergo the System Admin training in order to better support users and maintain the portal.



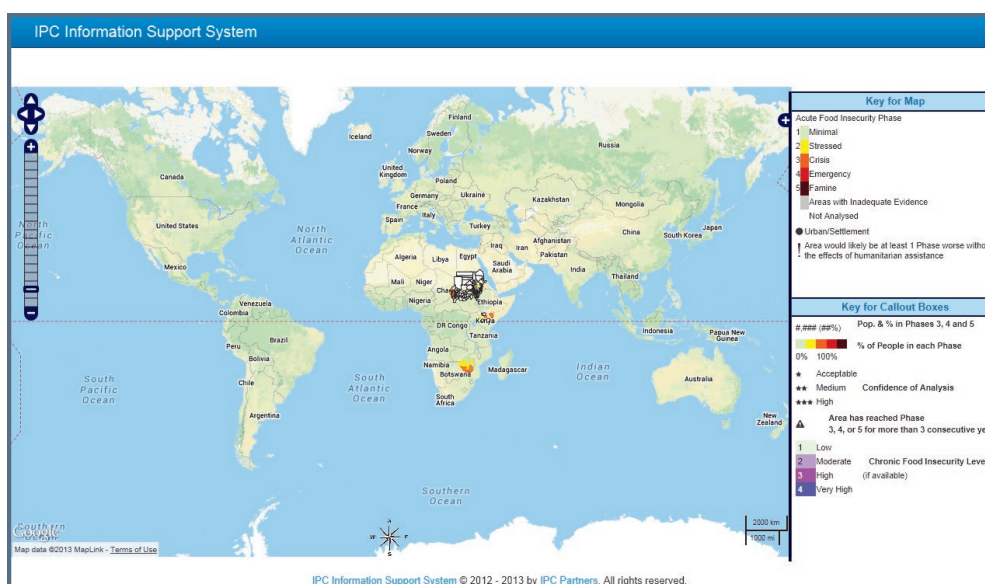
IPC Analysis in Bangui Boukoko, Central African Republic, May 2012

PUBLIC ACCESS TO IPC ANALYSES

Countries can opt to utilize the ISS in 'private' mode, in which case it acts as an application accessible only to Country Technical Working Group members. In this situation, no data or information is publicly available. Alternatively, country focal people can decide to share IPC data for stakeholders by enabling public view of the Communication Template.

To view the publicly shared analysis, follow the link: <http://iss.ipcinfo.org/public/map>

The public map is 'clickable', meaning that it allows the user to click on analysis areas and see the pop-up box with more information.



IPC ISS Global public
Map and Database of
IPC analysis Worldwide

For **more information** on the IPC ISS please send an e-mail to: iss@ipcinfo.org

IPC Global Steering Committee Members:



The IPC development and implementation is made possible by the support of:



The IPC has also benefited from the support of the governments of Australia, Canada, Germany, the Netherlands, Sweden, and the United States of America.

IPC GLOBAL SUPPORT UNIT

Viale delle Terme di Caracalla, 00153 Rome, Italy
Tel. +39 06 76 54899
E-mail: ipcinfo@fao.org
Skype: [ipc.initiative](https://www.skype.com/en/contacts/ipc/initiative)
www.ipcinfo.org